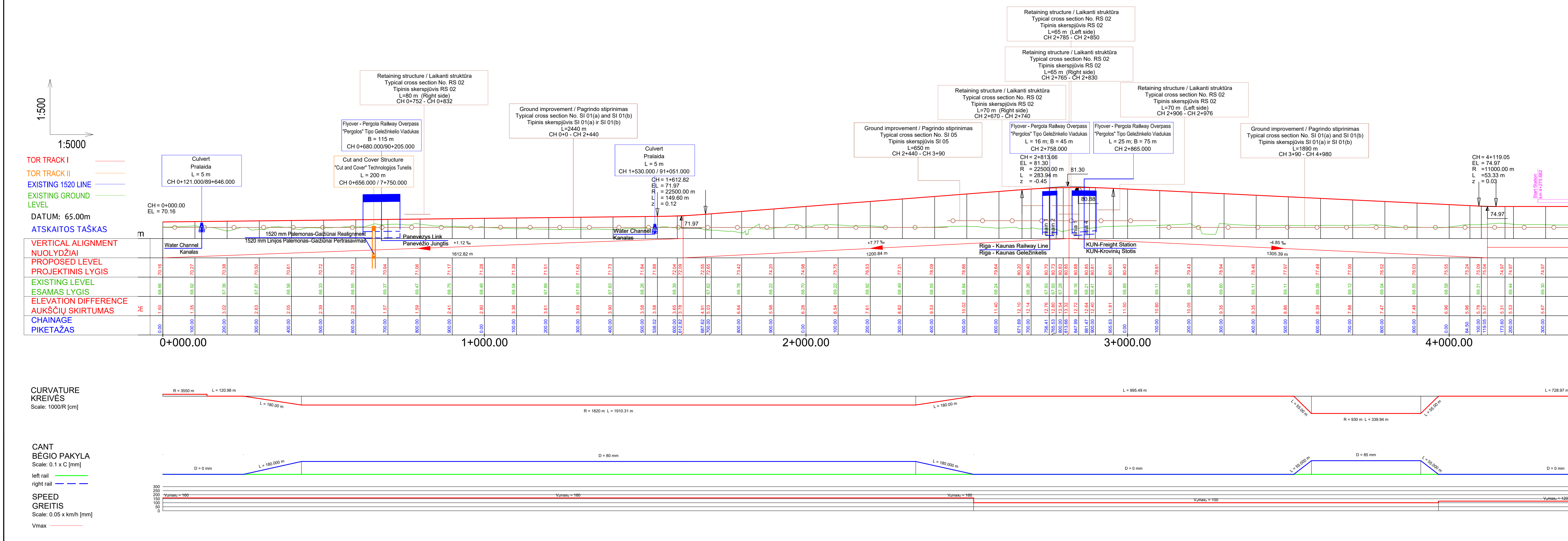


Sąvoklos rėbis / Limit Of Municipality	
[Symbol]	Sėnėjimo rėbis / Limit Of Municipality
[Symbol]	Miesto rėbis / Limit Of Town
[Symbol]	Intermodalinis terminas / Intermodal Terminal
[Symbol]	Kauno LEZ teritorija / Kaunas FEZ Territory
[Symbol]	Esamoji VĮ Registrų centre projektavimo žemės sklypo rėbis / Limit Of Land Plot
[Symbol]	IUP galimybės rėbis / EDP Validity Limit
[Symbol]	Žemės sklypo, planuojamo paimti visuomenės poveikiais, rėbis / Limit Of Land Plot Planned To Be Taken For Public Use
[Symbol]	Protestas / Building
Geležinkelio infrastruktūra / Railway Infrastructure	
[Symbol]	Esamas 1520 mm geležinkelis / Existing 1520 mm Railway
[Symbol]	Planuojamas 1520 mm geležinkelis / Planned 1520 mm Railway
[Symbol]	Planuojamas 1435 mm geležinkelis / Planned 1435 mm Railway Mainline
[Symbol]	Planuojamas 1435 mm geležinkelio įtaka / Planned 1435 mm Railway Bypass
[Symbol]	Perspektyvinis trasavimas, kelio šakos būklės išdėstymas / Perspective alignment, track centre line to be clarified in the design stage
[Symbol]	Planuojamas 1435/1520 mm kelių sankirta / Planned 1435/1520 mm Crossing
[Symbol]	Planuojamas 1435 mm kelių sankirta / Planned 1435 mm Turnout
[Symbol]	Planuojamas nykimas / Planned Embankment Cut
[Symbol]	Demontuojamas 1520 mm geležinkelis / Demolished 1520 mm Railway
Geležinkelio platformos / Railway Platform	
[Symbol]	Geležinkelio apsaugos zona / Railway Protection Zone
[Symbol]	Planuojamas geležinkelio viadukas / Planned Railway Viaduct
[Symbol]	Planuojamas geležinkelio tiltas / Planned Railway Bridge
[Symbol]	Planuojamas geležinkelio tunelis / Planned Railway Tunnel
[Symbol]	Planuojama pralaida / Planned Culvert
[Symbol]	Planuojamas kelių viadukas / Planned Road Overpass
[Symbol]	Planuojamas automobilių tunelis / Planned Road Tunnel
[Symbol]	Planuojama požeminė pėsčiųjų perėja / Planned Underground Pedestrian Crossing
[Symbol]	Planuojamas pėsčiųjų viadukas / Planned Overground Pedestrian Crossing
[Symbol]	Planuojamas pragros / Planned Animal Treadpass
[Symbol]	Planuojamas perėjimo gyvūnams / Planned Overpass Wildlife Crossing
[Symbol]	Planuojamas atnaminis sienelės / Planned Retaining Wall
[Symbol]	Geležinkelio sankirtos pagrindo stiprinimas / Ground Improvement Works
[Symbol]	Esanti statiniai / Existing Structure
[Symbol]	Planuojama triukšmo slopinimo sienelė / Planned Noise Reduction Wall
[Symbol]	Esantysis triukšmo slopinimo sienelė / Existing Under Construction Noise Reduction Wall
[Symbol]	Demontuojama esantysis triukšmo slopinimo sienelė / Demolished Existing Under Construction Noise Reduction Wall
[Symbol]	Vandens kanalas su šilumos apsauga / Vandens kanalas su šilumos apsauga / Water channel to be shortened / Water channel to be relocated
[Symbol]	Žemės plotas rezervavimas signalizacijos platformų vietai / Land plot reservation area at System Equipment Locations
[Symbol]	Vandens kanalo perkėlimo pasiūlymas / Water channel relocation proposal
[Symbol]	Technologinis (ne vedžio) mazgoje įrengtas VLRD teritorija / Technical (non-traffic) node area with VLRD territory
Automobilių keliai / Roads	
[Symbol]	Valstybinė reikšmės magistralinis kelias / Highway
[Symbol]	Valstybinė reikšmės krašto kelias / District Road
[Symbol]	Valstybinė reikšmės apylinkės kelias / County Road
[Symbol]	Vietinė reikšmės kelias arba gatvė su asfalto danga / Asphalt Local Road or Street
[Symbol]	Vietinė reikšmės kelias arba gatvė su žvyro danga / Gravel Local Road or Street
[Symbol]	Planuojamas kelias arba gatvė / Planned Road or Street
[Symbol]	Planuojamas pralaidas / Planned Access Road
[Symbol]	Planuojami techniniai apsauginiai keliai / Planned Maintenance Roads
[Symbol]	Klas projektavimui parengti keliai, arba galimi sprendiniai / Planned Road or Street Solutions on other Projects
[Symbol]	Planuojamas kelių užbarymas / Planned Road Closure
[Symbol]	Planuojamas apšvietimas / Planned Enclosure
[Symbol]	Esamoji apšvietimo zona / Existing Road Protection Zone
[Symbol]	Planuojamas apšvietimas / Planned Enclosure
[Symbol]	Aptarnavimo platformos / Maintenance Platforms

Layout plan / Kelių išdėstymo planas
Scale / Mastelis 1:5000



PASTABA:
Projekto „Rail Baltica“ geležinkelio linijos Kaunas-Vilnius susisiekimo komunikacijų inžinerinės infrastruktūros vystymo plane pateikti susisiekimo komunikacijų sprendiniai (geležinkelio ir automobilių kelių planai, apjungiamųjų kelių ir gatvių planai, planuojamos srities lygi, sankirtos, sankirtos, tunelių pralaidos, viadukai, triukšmo slopinimo priemonės, apšvietimo priemonės) yra preliminarūs ir turi būti tikslinami techninio bei darbo projekto rengimo metu neįtraukiant specialiojo projekto rengimo procedūros.

NOTE 1:
The communication network engineering infrastructure development plan for Rail Baltica railway line Kaunas-Vilnius presented solutions for transport communications (width of railway tracks and roads, width of connecting roads and streets, planned intersections at different levels, crossings, tunnel passages, overpasses, noise reduction measures, environmental measures for animals and other structures of the solution) are preliminary and must be revised during the preparation of the technical (Master) and the working (Detail) project without initiating the procedure for adjusting and/or changing of the special plan.

PASTABOS / NOTES:
1. Kiti sprendiniai pateikti brėžinyje Nr. 19263-00-STP-S-8-SS-02-001.
2. Informacija apie grupinio vandens lygį pateikta Nulčių linijos inžinerinės infrastruktūros ir geotechninio tyrimo ataskaitoje. / For more information regarding ground water level please see the Geotechnical Survey Report.
3. 2024-05-16, 19263-00-STP-S-8-SS-02-001, 19263-00-STP-S-8-SS-02-002, 19263-00-STP-S-8-SS-02-003, 19263-00-STP-S-8-SS-02-004, 19263-00-STP-S-8-SS-02-005, 19263-00-STP-S-8-SS-02-006, 19263-00-STP-S-8-SS-02-007, 19263-00-STP-S-8-SS-02-008, 19263-00-STP-S-8-SS-02-009, 19263-00-STP-S-8-SS-02-010, 19263-00-STP-S-8-SS-02-011, 19263-00-STP-S-8-SS-02-012, 19263-00-STP-S-8-SS-02-013, 19263-00-STP-S-8-SS-02-014, 19263-00-STP-S-8-SS-02-015, 19263-00-STP-S-8-SS-02-016, 19263-00-STP-S-8-SS-02-017, 19263-00-STP-S-8-SS-02-018, 19263-00-STP-S-8-SS-02-019, 19263-00-STP-S-8-SS-02-020, 19263-00-STP-S-8-SS-02-021, 19263-00-STP-S-8-SS-02-022, 19263-00-STP-S-8-SS-02-023, 19263-00-STP-S-8-SS-02-024, 19263-00-STP-S-8-SS-02-025, 19263-00-STP-S-8-SS-02-026, 19263-00-STP-S-8-SS-02-027, 19263-00-STP-S-8-SS-02-028, 19263-00-STP-S-8-SS-02-029, 19263-00-STP-S-8-SS-02-030, 19263-00-STP-S-8-SS-02-031, 19263-00-STP-S-8-SS-02-032, 19263-00-STP-S-8-SS-02-033, 19263-00-STP-S-8-SS-02-034, 19263-00-STP-S-8-SS-02-035, 19263-00-STP-S-8-SS-02-036, 19263-00-STP-S-8-SS-02-037, 19263-00-STP-S-8-SS-02-038, 19263-00-STP-S-8-SS-02-039, 19263-00-STP-S-8-SS-02-040, 19263-00-STP-S-8-SS-02-041, 19263-00-STP-S-8-SS-02-042, 19263-00-STP-S-8-SS-02-043, 19263-00-STP-S-8-SS-02-044, 19263-00-STP-S-8-SS-02-045, 19263-00-STP-S-8-SS-02-046, 19263-00-STP-S-8-SS-02-047, 19263-00-STP-S-8-SS-02-048, 19263-00-STP-S-8-SS-02-049, 19263-00-STP-S-8-SS-02-050, 19263-00-STP-S-8-SS-02-051, 19263-00-STP-S-8-SS-02-052, 19263-00-STP-S-8-SS-02-053, 19263-00-STP-S-8-SS-02-054, 19263-00-STP-S-8-SS-02-055, 19263-00-STP-S-8-SS-02-056, 19263-00-STP-S-8-SS-02-057, 19263-00-STP-S-8-SS-02-058, 19263-00-STP-S-8-SS-02-059, 19263-00-STP-S-8-SS-02-060, 19263-00-STP-S-8-SS-02-061, 19263-00-STP-S-8-SS-02-062, 19263-00-STP-S-8-SS-02-063, 19263-00-STP-S-8-SS-02-064, 19263-00-STP-S-8-SS-02-065, 19263-00-STP-S-8-SS-02-066, 19263-00-STP-S-8-SS-02-067, 19263-00-STP-S-8-SS-02-068, 19263-00-STP-S-8-SS-02-069, 19263-00-STP-S-8-SS-02-070, 19263-00-STP-S-8-SS-02-071, 19263-00-STP-S-8-SS-02-072, 19263-00-STP-S-8-SS-02-073, 19263-00-STP-S-8-SS-02-074, 19263-00-STP-S-8-SS-02-075, 19263-00-STP-S-8-SS-02-076, 19263-00-STP-S-8-SS-02-077, 19263-00-STP-S-8-SS-02-078, 19263-00-STP-S-8-SS-02-079, 19263-00-STP-S-8-SS-02-080, 19263-00-STP-S-8-SS-02-081, 19263-00-STP-S-8-SS-02-082, 19263-00-STP-S-8-SS-02-083, 19263-00-STP-S-8-SS-02-084, 19263-00-STP-S-8-SS-02-085, 19263-00-STP-S-8-SS-02-086, 19263-00-STP-S-8-SS-02-087, 19263-00-STP-S-8-SS-02-088, 19263-00-STP-S-8-SS-02-089, 19263-00-STP-S-8-SS-02-090, 19263-00-STP-S-8-SS-02-091, 19263-00-STP-S-8-SS-02-092, 19263-00-STP-S-8-SS-02-093, 19263-00-STP-S-8-SS-02-094, 19263-00-STP-S-8-SS-02-095, 19263-00-STP-S-8-SS-02-096, 19263-00-STP-S-8-SS-02-097, 19263-00-STP-S-8-SS-02-098, 19263-00-STP-S-8-SS-02-099, 19263-00-STP-S-8-SS-02-100, 19263-00-STP-S-8-SS-02-101, 19263-00-STP-S-8-SS-02-102, 19263-00-STP-S-8-SS-02-103, 19263-00-STP-S-8-SS-02-104, 19263-00-STP-S-8-SS-02-105, 19263-00-STP-S-8-SS-02-106, 19263-00-STP-S-8-SS-02-107, 19263-00-STP-S-8-SS-02-108, 19263-00-STP-S-8-SS-02-109, 19263-00-STP-S-8-SS-02-110, 19263-00-STP-S-8-SS-02-111, 19263-00-STP-S-8-SS-02-112, 19263-00-STP-S-8-SS-02-113, 19263-00-STP-S-8-SS-02-114, 19263-00-STP-S-8-SS-02-115, 19263-00-STP-S-8-SS-02-116, 19263-00-STP-S-8-SS-02-117, 19263-00-STP-S-8-SS-02-118, 19263-00-STP-S-8-SS-02-119, 19263-00-STP-S-8-SS-02-120, 19263-00-STP-S-8-SS-02-121, 19263-00-STP-S-8-SS-02-122, 19263-00-STP-S-8-SS-02-123, 19263-00-STP-S-8-SS-02-124, 19263-00-STP-S-8-SS-02-125, 19263-00-STP-S-8-SS-02-126, 19263-00-STP-S-8-SS-02-127, 19263-00-STP-S-8-SS-02-128, 19263-00-STP-S-8-SS-02-129, 19263-00-STP-S-8-SS-02-130, 19263-00-STP-S-8-SS-02-131, 19263-00-STP-S-8-SS-02-132, 19263-00-STP-S-8-SS-02-133, 19263-00-STP-S-8-SS-02-134, 19263-00-STP-S-8-SS-02-135, 19263-00-STP-S-8-SS-02-136, 19263-00-STP-S-8-SS-02-137, 19263-00-STP-S-8-SS-02-138, 19263-00-STP-S-8-SS-02-139, 19263-00-STP-S-8-SS-02-140, 19263-00-STP-S-8-SS-02-141, 19263-00-STP-S-8-SS-02-142, 19263-00-STP-S-8-SS-02-143, 19263-00-STP-S-8-SS-02-144, 19263-00-STP-S-8-SS-02-145, 19263-00-STP-S-8-SS-02-146, 19263-00-STP-S-8-SS-02-147, 19263-00-STP-S-8-SS-02-148, 19263-00-STP-S-8-SS-02-149, 19263-00-STP-S-8-SS-02-150, 19263-00-STP-S-8-SS-02-151, 19263-00-STP-S-8-SS-02-152, 19263-00-STP-S-8-SS-02-153, 19263-00-STP-S-8-SS-02-154, 19263-00-STP-S-8-SS-02-155, 19263-00-STP-S-8-SS-02-156, 19263-00-STP-S-8-SS-02-157, 19263-00-STP-S-8-SS-02-158, 19263-00-STP-S-8-SS-02-159, 19263-00-STP-S-8-SS-02-160, 19263-00-STP-S-8-SS-02-161, 19263-00-STP-S-8-SS-02-162, 19263-00-STP-S-8-SS-02-163, 19263-00-STP-S-8-SS-02-164, 19263-00-STP-S-8-SS-02-165, 19263-00-STP-S-8-SS-02-166, 19263-00-STP-S-8-SS-02-167, 19263-00-STP-S-8-SS-02-168, 19263-00-STP-S-8-SS-02-169, 19263-00-STP-S-8-SS-02-170, 19263-00-STP-S-8-SS-02-171, 19263-00-STP-S-8-SS-02-172, 19263-00-STP-S-8-SS-02-173, 19263-00-STP-S-8-SS-02-174, 19263-00-STP-S-8-SS-02-175, 19263-00-STP-S-8-SS-02-176, 19263-00-STP-S-8-SS-02-177, 19263-00-STP-S-8-SS-02-178, 19263-00-STP-S-8-SS-02-179, 19263-00-STP-S-8-SS-02-180, 19263-00-STP-S-8-SS-02-181, 19263-00-STP-S-8-SS-02-182, 19263-00-STP-S-8-SS-02-183, 19263-00-STP-S-8-SS-02-184, 19263-00-STP-S-8-SS-02-185, 19263-00-STP-S-8-SS-02-186, 19263-00-STP-S-8-SS-02-187, 19263-00-STP-S-8-SS-02-188, 19263-00-STP-S-8-SS-02-189, 19263-00-STP-S-8-SS-02-190, 19263-00-STP-S-8-SS-02-191, 19263-00-STP-S-8-SS-02-192, 19263-00-STP-S-8-SS-02-193, 19263-00-STP-S-8-SS-02-194, 19263-00-STP-S-8-SS-02-195, 19263-00-STP-S-8-SS-02-196, 19263-00-STP-S-8-SS-02-197, 19263-00-STP-S-8-SS-02-198, 19263-00-STP-S-8-SS-02-199, 19263-00-STP-S-8-SS-02-200, 19263-00-STP-S-8-SS-02-201, 19263-00-STP-S-8-SS-02-202, 19263-00-STP-S-8-SS-02-203, 19263-00-STP-S-8-SS-02-204, 19263-00-STP-S-8-SS-02-205, 19263-00-STP-S-8-SS-02-206, 19263-00-STP-S-8-SS-02-207, 19263-00-STP-S-8-SS-02-208, 19263-00-STP-S-8-SS-02-209, 19263-00-STP-S-8-SS-02-210, 19263-00-STP-S-8-SS-02-211, 19263-00-STP-S-8-SS-02-212, 19263-00-STP-S-8-SS-02-213, 19263-00-STP-S-8-SS-02-214, 19263-00-STP-S-8-SS-02-215, 19263-00-STP-S-8-SS-02-216, 19263-00-STP-S-8-SS-02-217, 19263-00-STP-S-8-SS-02-218, 19263-00-STP-S-8-SS-02-219, 19263-00-STP-S-8-SS-02-220, 19263-00-STP-S-8-SS-02-221, 19263-00-STP-S-8-SS-02-222, 19263-00-STP-S-8-SS-02-223, 19263-00-STP-S-8-SS-02-224, 19263-00-STP-S-8-SS-02-225, 19263-00-STP-S-8-SS-02-226, 19263-00-STP-S-8-SS-02-227, 19263-00-STP-S-8-SS-02-228, 19263-00-STP-S-8-SS-02-229, 19263-00-STP-S-8-SS-02-230, 19263-00-STP-S-8-SS-02-231, 19263-00-STP-S-8-SS-02-232, 19263-00-STP-S-8-SS-02-233, 19263-00-STP-S-8-SS-02-234, 19263-00-STP-S-8-SS-02-235, 19263-00-STP-S-8-SS-02-236, 19263-00-STP-S-8-SS-02-237, 19263-00-STP-S-8-SS-02-238, 19263-00-STP-S-8-SS-02-239, 19263-00-STP-S-8-SS-02-240, 19263-00-STP-S-8-SS-02-241, 19263-00-STP-S-8-SS-02-242, 19263-00-STP-S-8-SS-02-243, 19263-00-STP-S-8-SS-02-244, 19263-00-STP-S-8-SS-02-245, 19263-00-STP-S-8-SS-02-246, 19263-00-STP-S-8-SS-02-247, 19263-00-STP-S-8-SS-02-248, 19263-00-STP-S-8-SS-02-249, 19263-00-STP-S-8-SS-02-250, 19263-00-STP-S-8-SS-02-251, 19263-00-STP-S-8-SS-02-252, 19263-00-STP-S-8-SS-02-253, 19263-00-STP-S-8-SS-02-254, 19263-00-STP-S-8-SS-02-255, 19263-00-STP-S-8-SS-02-256, 19263-00-STP-S-8-SS-02-257, 19263-00-STP-S-8-SS-02-258, 19263-00-STP-S-8-SS-02-259, 19263-00-STP-S-8-SS-02-260, 19263-00-STP-S-8-SS-02-261, 19263-00-STP-S-8-SS-02-262, 19263-00-STP-S-8-SS-02-263, 19263-00-STP-S-8-SS-02-264, 19263-00-STP-S-8-SS-02-265, 19263-00-STP-S-8-SS-02-266, 19263-00-STP-S-8-SS-02-267, 19263-00-STP-S-8-SS-02-268, 19263-00-STP-S-8-SS-02-269, 19263-00-STP-S-8-SS-02-270, 19263-00-STP-S-8-SS-02-271, 19263-00-STP-S-8-SS-02-272, 19263-00-STP-S-8-SS-02-273, 19263-00-STP-S-8-SS-02-274, 19263-00-STP-S-8-SS-02-275, 19263-00-STP-S-8-SS-02-276, 19263-00-STP-S-8-SS-02-277, 19263-00-STP-S-8-SS-02-278, 19263-00-STP-S-8-SS-02-279, 19263-00-STP-S-8-SS-02-280, 19263-00-STP-S-8-SS-02-281, 19263-00-STP-S-8-SS-02-282, 19263-00-STP-S-8-SS-02-283, 19263-00-STP-S-8-SS-02-284, 19263-00-STP-S-8-SS-02-285, 19263-00-STP-S-8-SS-02-286, 19263-00-STP-S-8-SS-02-287, 19263-00-STP-S-8-SS-02-288, 19263-00-STP-S-8-SS-02-289, 19263-00-STP-S-8-SS-02-290, 19263-00-STP-S-8-SS-02-291, 19263-00-STP-S-8-SS-02-292, 19263-00-STP-S-8-SS-02-293, 19263-00-STP-S-8-SS-02-294, 19263-00-STP-S-8-SS-02-295, 19263-00-STP-S-8-SS-02-296, 19263-00-STP-S-8-SS-02-297, 19263-00-STP-S-8-SS-02-298, 19263-00-STP-S-8-SS-02-299, 19263-00-STP-S-8-SS-02-300, 19263-00-STP-S-8-SS-02-301, 19263-00-STP-S-8-SS-02-302, 19263-00-STP-S-8-SS-02-303, 19263-00-STP-S-8-SS-02-304, 19263-00-STP-S-8-SS-02-305, 19263-00-STP-S-8-SS-02-306, 19263-00-STP-S-8-SS-02-307, 19263-00-STP-S-8-SS-02-308, 19263-00-STP-S-8-SS-02-309, 19263-00-STP-S-8-SS-02-310, 19263-00-STP-S-8-SS-02-311, 19263-00-STP-S-8-SS-02-312, 19263-00-STP-S-8-SS-02-313, 19263-00-STP-S-8-SS-02-314, 19263-00-STP-S-8-SS-02-315, 19263-00-STP-S-8-SS-02-316, 19263-00-STP-S-8-SS-02-317, 19263-00-STP-S-8-SS-02-318, 19263-00-STP-S-8-SS-02-319, 19263-00-STP-S-8-SS-02-320, 19263-00-STP-S-8-SS-02-321, 19263-00-STP-S-8-SS-02-322, 19263-00-STP-S-8-SS-02-323, 19263-00-STP-S-8-SS-02-324, 19263-00-STP-S-8-SS-02-325, 19263-00-STP-S-8-SS-02-326, 19263-00-STP-S-8-SS-02-327, 19263-00-STP-S-8-SS-02-328, 19263-00-STP-S-8-SS-02-329, 19263-00-STP-S-8-SS-02-330, 19263-00-STP-S-8-SS-02-331, 19263-00-STP-S-8-SS-02-332, 19263-00-STP-S-8-SS-02-333, 19263-00-STP-S-8-SS-02-334, 19263-00-STP-S-8-SS-02-335, 19263-00-STP-S-8-SS-02-336, 19263-00-STP-S-8-SS-02-337, 19263-00-STP-S-8-SS-02-338, 19263-00-STP-S-8-SS-02-339, 19263-00-STP-S-8-SS-02-340, 19263-00-STP-S-8-SS-02-341, 19263-00-STP-S-8-SS-02-342, 19263-00-STP-S-8-SS-02-343, 19263-00-STP-S-8-SS-02-344, 19263-00-STP-S-8-SS-02-345, 19263-00-STP-S-8-SS-02-346, 19263-00-STP-S-8-SS-02-347, 19263-00-STP-S-8-SS-02-348, 19263-00-STP-S-8-SS-02-349, 19263-00-STP-S-8-SS-02-350, 19263-00-STP-S-8-SS-02-351, 19263-00-STP-S-8-SS-02-352, 19263-00-STP-S-8-SS-02-353, 19263-00-STP-S-8-SS-02-354, 19263-00-STP-S-8-SS-02-355, 19263-00-STP-S-8-SS-02-356, 19263-00-STP-S-8-SS-02-357, 19263-00-STP-S-8-SS-02-358, 19263-00-STP-S-8-SS-02-359, 19263-00-STP-S-8-SS-02-360, 19263-00-STP-S-8-SS-02-361, 19263-00-STP-S-8-SS-02-362, 19263-00-STP-S-8-SS-02-363, 19263-00-STP-S-8-SS-02-364, 19263-00-STP-S-8-SS-02-365, 19263-00-STP-S-8-SS-02-366, 19263-00-STP-S-8-SS-02-367, 19263-00-STP-S-8-SS-02-368, 19263-00-STP-S-8-SS-02-369, 19263-00-STP-S-8-SS-02-370, 19263-00-STP-S-8-SS-02-371, 19263-00-STP-S-8-SS-02-372, 19263-00-STP-S-8-SS-02-373, 19263-00-STP-S-8